

SYSTEM OF WATERPROOFING AND DRAINAGE FOR SEDUM ROOFS



NOVAGLASS
WATERPROOFING MATERIALS

nophADRAIN[®]
SMART GREEN ROOF SYSTEMS

mob1: +382 68 17 88 44 | mob2: +382 68 42 49 17

tel/fax: +382 32 32 66 96 | www.izonet.net

Upravno i izvođačko odeljenje, veleprodaja i izložbeni salon:

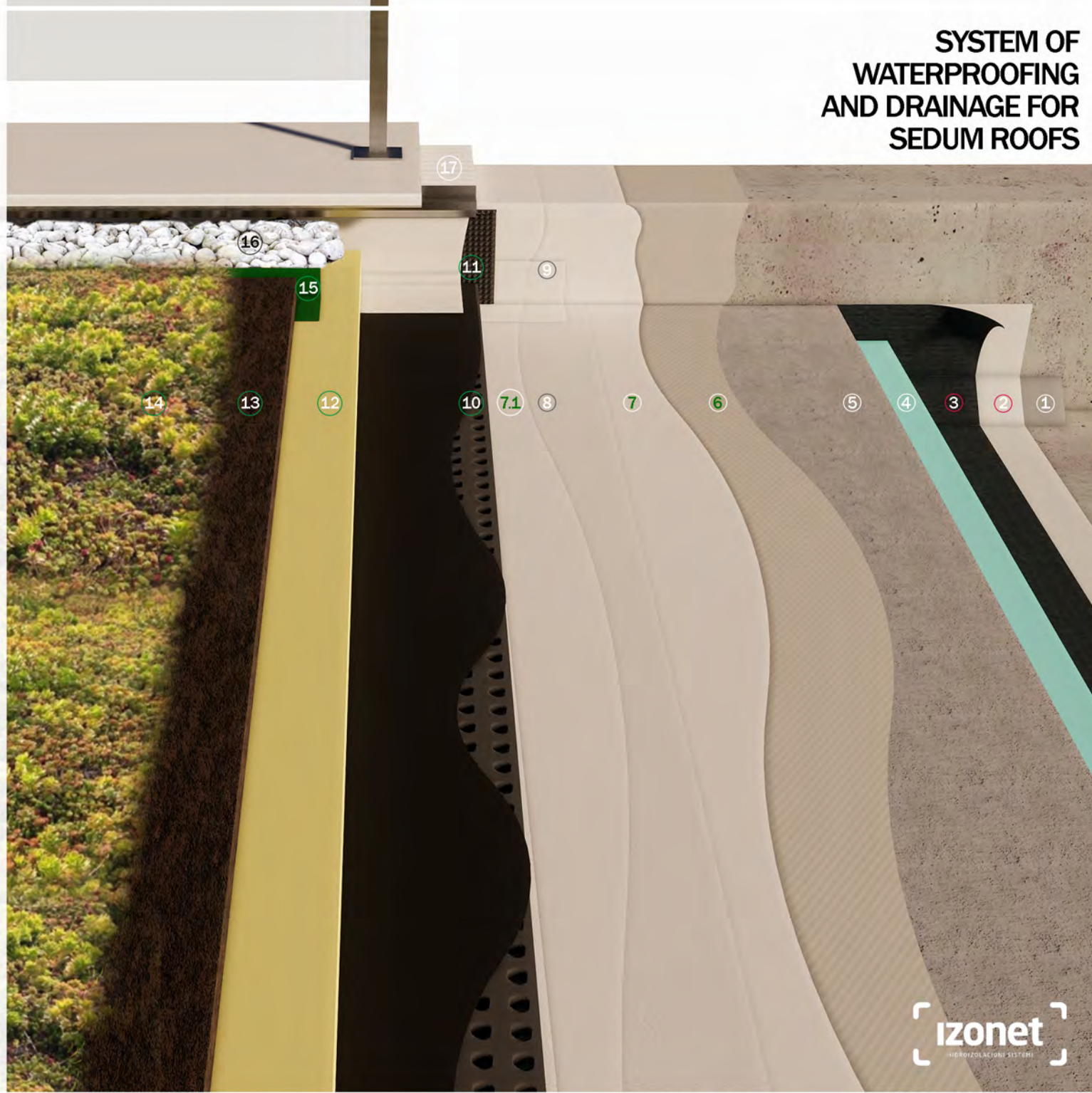
Kovačko polje b.b., 85320, Kotor | e-mail: team@izonet.net

@izonet_hidroizolacije @izonet_roofs_floors_walls @izonet_veleprodaja

izonet
HIDROIZOLACIONI SISTEMI

SYSTEM OF WATERPROOFING AND DRAINAGE FOR SEDUM ROOFS

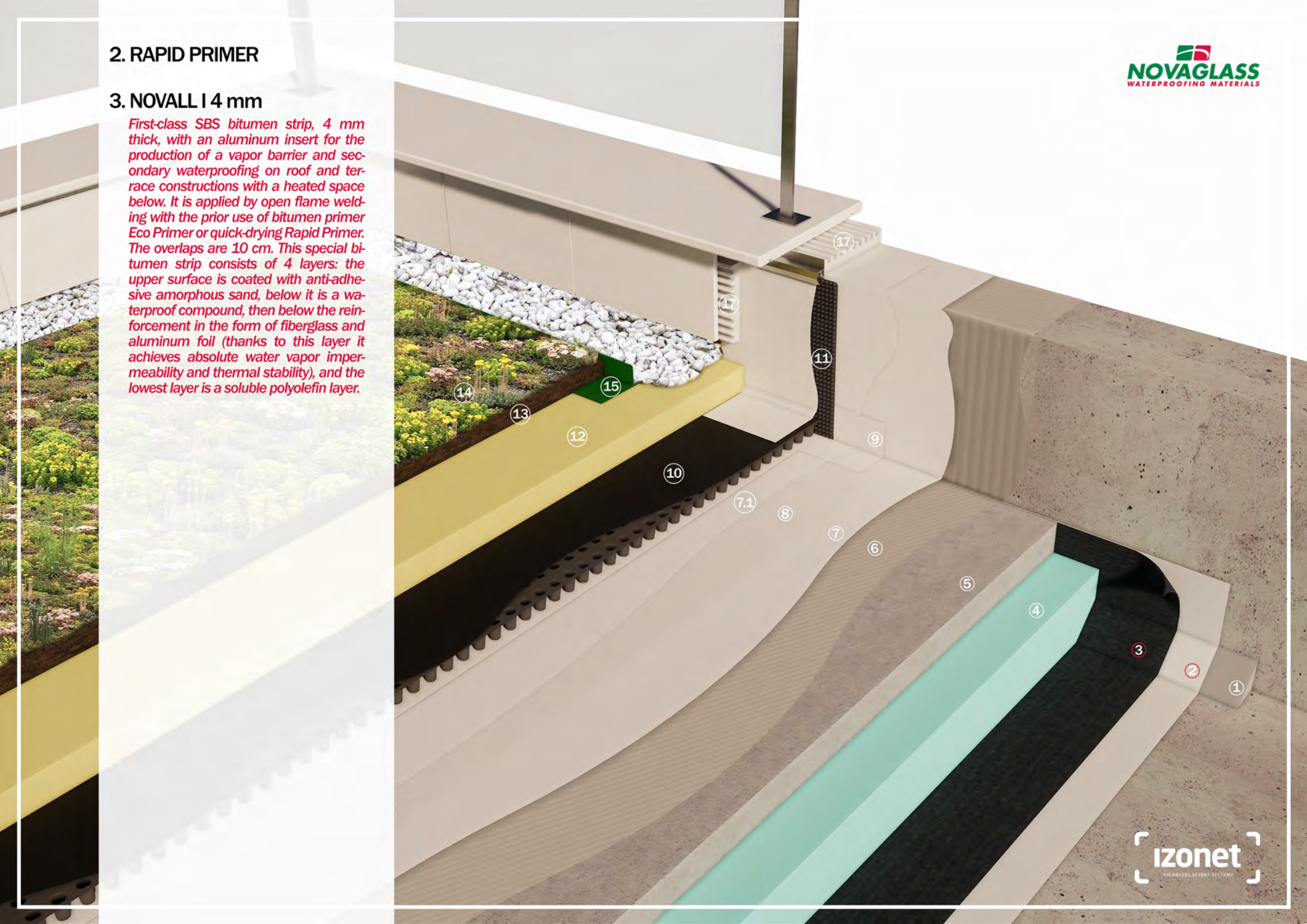
1. **GEOLITE** *holker*
2. **RAPID PRIMER**
primer /NOVAGLASS/
3. **NOVALL I 4 mm**
secondary waterproofing and vapor barrier /NOVAGLASS/
4. **XPS** *thermal insulation*
5. **cement screed under the slope of 2%**
6. **ESHADESMOLAST PRIMER AQUA 2K**
primer and a separate layer for making a vapor barrier/ESHA/
7. **ESHADESMOLAST**
primary poliurethane waterproofing /ESHA/
- 7.1. **ESHADESMOTOP**
layer for additional chemical protection over the poliurethane waterproofing ESHADESMOLAST /ESHA/
8. **IZOFLEECE 1000**
reinforcing canvas for full surface immersion in waterproofing
9. **IZOFLEECE 200** *reinforcing tape*
10. **ND 5+1**
horizontal drainage accumulation layer /NOPHADRAIN/
11. **ND 120 + ND CLIC Profile**
suspension system
vertical drainage protective layer /NOPHADRAIN/
12. **ND SM-50**
substrate panel (cca 30 l/m²) /NOPHADRAIN/
13. **ND DGS-E**
earth substrate /NOPHADRAIN/
14. **ND SEDUM**
sedum vegetation /NOPHADRAIN/
15. **GREENLINER**
dividing profile /NOPHADRAIN/
16. **Pebble** *granulation 16-32 mm*
17. **ARDEX FB 9L** *adhesive for stone*



2. RAPID PRIMER

3. NOVALL I 4 mm

First-class SBS bitumen strip, 4 mm thick, with an aluminum insert for the production of a vapor barrier and secondary waterproofing on roof and terrace constructions with a heated space below. It is applied by open flame welding with the prior use of bitumen primer Eco Primer or quick-drying Rapid Primer. The overlaps are 10 cm. This special bitumen strip consists of 4 layers: the upper surface is coated with anti-adhesive amorphous sand, below it is a waterproof compound, then below the reinforcement in the form of fiberglass and aluminum foil (thanks to this layer it achieves absolute water vapor impermeability and thermal stability), and the lowest layer is a soluble polyolefin layer.





6. ESHADESMOLAST PRIMER AQUA 2K

ESHADESMOLAST PRIMER AQUA 2K is a two component water based epoxy coating. Its main use is as primer for adhesion improvement of polymer waterproofing coatings, or as a separate material for making a vapor barrier, etc. It is easy to use, safe for the environment and has many applications in the construction sector. It is applied in one or more layers with a brush, roller or spray gun.

7. ESHADESMOLAST

ESHADESMOLAST is one component elastomeric waterproofing coating for horizontal surfaces, based on hydrophobic polyurethane resins. It is white. When in contact with ground and air moisture it polymerizes and creates a flexible and coherent membrane. The material is elastic and adheres well to porous surfaces. It is resistant to mechanical stresses and the occurrence of fractures on the structure, so it is an excellent means of protection in pedestrian and road traffic zones. Resistant to UV radiation and exposure to moisture as well as temperature changes.

7.1. ESHADESMOTOP

ESHADESMOTOP is a liquid one-component elastomeric thin coating membrane for waterproofing based on aliphatic polyurethane. It is used for surface sealing and additional protection of basic polyurethane waterproofing if it is exposed to more extreme conditions. In contact with atmospheric moisture, it forms an elastic waterproofing and protective layer without bubbles. It does not shrink, does not crack and remains elastic due to large temperature changes. It is also resistant to mechanical stresses, it is passable, reflective and resistant to weather changes and ultraviolet rays (it does not change color during time).

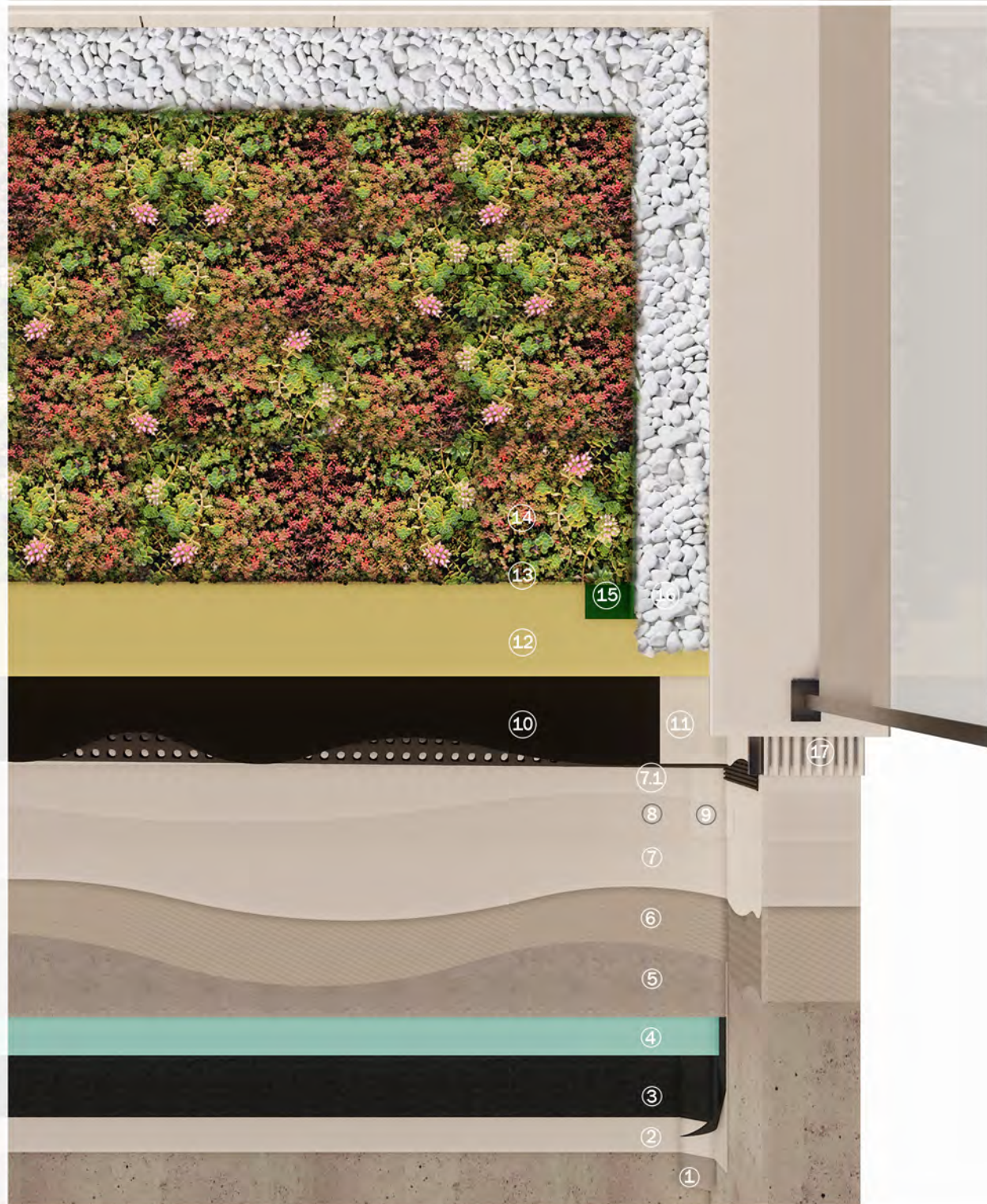


8. IZOFLEECE 1000

IZOFLEECE 1000 is a polypropylene reinforcing fleece that is completely immersed in coated waterproofing with a mutual overlap of min. 5 cm. It is used for indoor and outdoor spaces on horizontal and vertical surfaces. Ideal for compensation movements of unstable and different substrates where additional reinforcement of the waterproofing is necessary. It is easy to install, and after its application, the work can be resumed quickly.

9. IZOFLEECE 200

IZOFLEECE is special polypropylene fabric - tape, white colored, for bandaging and strengthening corners, edges, fractures as well as joints and penetrations that have the risk of movement and crack- ing. In combination with quality coating waterproofing of any base, it makes a detail that is resistant to various deformations of the substrate, to splitting, alkalis, as well as to the usual chemical substances on the construction site. IZOFLEECE 200 is designed to guarantee strong adhesion on both sides with coating and immersing waterproofing.



10. ND 5+1

Drainage system that has tanks and is installed on roofs with limited slope on which intensive or extensive vegetation is planted. This is the product of the renowned Dutch manufacturer NOPHADRAIN. The drainage system prevents the creation of hydrostatic pressure on the waterproofing membrane, protects it from mechanical loads and ensures evaporation of the system. This product protects vegetation from excessive water retention in the winter, and together with ND-SM 25/50 substrate panels provides a sufficient amount of water to the vegetation in the dry season. It is a 3 in 1 (roll) product consisting of a filter polypropylene geotextile on the upper side and a sliding geotextile film for even pressure distribution glued to the dimpled core made up of a strong and solid combination of HDPE and polypropylene, with a total thickness of 27.5 mm. Atmospheric water (5.8 l / m²) accumulates and stores in the tubs.

11. ND 120 + ND CLIC

Drainage system for intensive and extensive green roofs, from the renowned Dutch manufacturer NOPHADRAIN. ND 120 is a layer that prevents the formation of hydrostatic pressure on the waterproofing membrane and protects it from mechanical loads. It enables water filtration and its efficient and fast leaving of the roof plane or vertical position in the planter system. It is a 3-in-1 product (in a roll) made of a filter polypropylene geotextile and a sliding film for even pressure distribution, glued to the dimpled core, which is consisted of a strong combination of HDPE and polypropylene, with a total thickness of 10 mm. This system comes with a special metal strip with which the drainage is mounted on vertical surfaces - ND Clic Profile. ND 120 can be placed on vertical and horizontal surfaces over waterproofing or construction.



12. ND SM-25/50

ND SM-25 and ND SM-50, from the Dutch manufacturer NOPHADRAIN, are substrate panels whose main role is to accumulate rainwater in the sedum roof system and enable plants to use the accumulated water during the dry period through roots and capillary rise. The substrate panel together with the drainage accumulation layer ND 5+1 provides a sufficient amount of water and moisture to the vegetation during the summer months and at the same time drains unnecessary and excessive amount of precipitation water during rainy periods.

13. ND DGS-E

ND DGS-E is a special soil substrate from the Dutch manufacturer NOPHADRAIN, which is used for sedum roofs. The thickness of the recommended layer is at least 5 cm. All the necessary nutrients for sedum vegetation can be found in this substrate.

14. ND SEDUM

NOPHADRAIN offers two variants of sedum vegetation - ND VEGETATION BLANKET and ND SEDUM CASSETTE. ND VEGETATION BLANKET is a sedum vegetation grown on a coconut mat with a plastic carrier that contains from 4 to 8 different varieties of sedum. Vegetation blanket can also be planted in a combination of sedum, plants and grasses. ND SEDUM CASSETTE is a ready to use green roof system. ND Sedum cassette is a special system because it includes soil substrate and plants (sedum) in one composite unit, cassette. We have 8 to 10 different types of sedum in one cassette. Each type of sedum respond to different climate conditions, and in this way the greening of sedum roof is ensured, wherever it is located, in any geographical zone, be it continental or Mediterranean.

